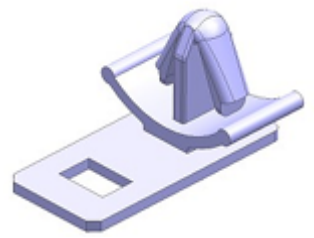




<b>General</b>	
Part Name	16MW 090 FHCL G BL ASSY & CLIP
Material	PBT
Colour	Silver Grey , Black
Gasket	NBR / Black
Clip	PA66/ Natural
Connection type / Sealed or Unsealed	Wire to wire / Sealed
Over all size	39.0 x 31.9 x 49.5 mm
Tab width	2.3mm
No. of Poles	16
Mating Part	16FW 090 FHCL G
Applicable Terminal	090 Male WP CL terminal
Applicable Wire seal	090 3 Groove Wire Seal / 090 2 Groove Wire Seal
Environmental Response	RoHS compliance
Operating Temperature	-40 to 85°C
Flammability	HB - UL94
IP Rating	X7

<b>Electrical characteristics</b>	
Current carrying capacity	10A [Ref]
Voltage Rating	12/24 VDC
Applicable wire	0.35 to 1.5mm <sup>2</sup> - ISO 6722
Dielectric strength	no break @1000VAC
Insulation resistance	100MΩ <a href="#">min.@500VDC</a>
Contact resistance (Initial / After durability)	5mΩ max / 10mΩ max.

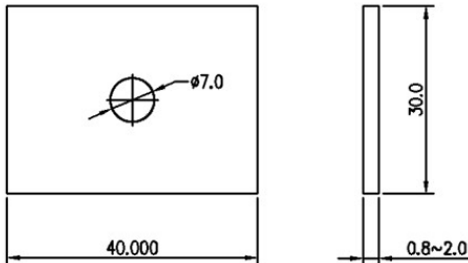
<b>Mechanical characteristics</b>	
Terminal Insertion force	1.5Kgf max.
Terminal retention force	6.0Kgf min.
Connector to connector Insertion Force	15.0Kgf max.
Connector to connector holding strength	6.0Kgf min.
Water Sealability [Initial]	1.0Kg/cm <sup>2</sup>
Clip Insertion Force	5.0Kgf max
Clip Retention Force	10.0Kgf min
Applicable Mounting panel	Panel Ø7 mm x 0.8-2.0 mm thickness



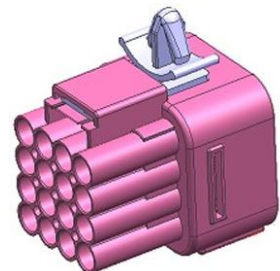
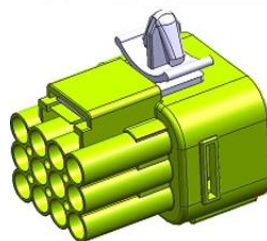
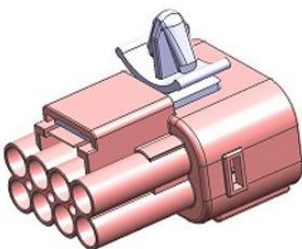
## EXTENSION BODY CLIP

Clip Size [mm]	25.8 Long x 18.0 wide x 13.7 ht
Clip material	PA 66
Colour	Natural
Mating Panel Hole	Ø7 mm
Mating Panel Thick	0.8 to 2.0 mm
Environmental Response	RoHS compliance
Operating Temperature	-40 to 120°C
Clip Insertion Force	5.0Kgf max.
Clip Holding Strength	10.0Kgf min.
Applicable Connectors	8MW / 12MW & 16MW 090 FHCL G BL

### Bracket Details :



### Applicable Connectors:



8MW 090 FHCL G BL ASSY

12MW 090 FHCL G BL ASSY

16MW 090 FHCL G BL ASSY